

 <p><i>at the</i></p>  <p>National Oceanography Centre NATURAL ENVIRONMENT RESEARCH COUNCIL</p>	<p>Permanent Service for Mean Sea Level (PSMSL) National Oceanography Centre, Joseph Proudman Building, 6 Brownlow Street, Liverpool L3 5DA, UK psmsl.org</p> <p>A member of the World Data System </p>
--	--

Permanent Service for Mean Sea Level (PSMSL) Report 2017-2018

Lesley Rickards, Andrew Matthews and Elizabeth Bradshaw

1 Introduction	2
2 Sea Level Futures Conference	2
3 Prof. Philip Woodworth elected as an IUGG Fellow	3
4 Number of Citations for PSMSL data series for the period 2012-2017	4
5 Mean Sea Level Data received during 2017-18	5
6 Global Sea Level Observing System (GLOSS) Core Network Status	8
7 Data Archaeology in collaboration with GLOSS	9
8 Developing a more structured and standardised approach to descriptive metadata.....	11
9 Interactive map showing long-term trends	11
10 Ellipsoidal Links for Revised Local Reference Data	12
11 Release of Bottom Pressure Recorder de-drifting code	12
12 Development of automatic quality control software	12
13 Ground based GNSS - Multipath Reflectometry (GNSS-MR)	13
14 PSMSL Staff and Advisory Group	14
15 Summary and forward look	14
Annex 1: Stations received from individual countries	16
Annex 2: Data Suppliers 2017 and 2018	17
Annex 3: Acronyms	19

1 Introduction

The Permanent Service for Mean Sea Level (PSMSL) is the internationally recognised global sea level data bank for long-term sea level change information from tide gauges and bottom pressure recorders. Established in 1933 by Joseph Proudman, who became its first Secretary, the PSMSL is responsible for the collection, publication, analysis and interpretation of sea level data from the global network of tide gauges and also provides a wider Service to the sea level community. The PSMSL is embedded within the National Oceanography Centre (NOC) at Liverpool, and is funded by the Natural Environment Research Council (NERC, a component of UK Research and Innovation).

The PSMSL reports to several bodies which operate under the auspices of the International Science Council (ISC). It is a Regular Member of the ISC's World Data System (WDS), reports to the International Union of Geodesy and Geophysics (IUGG), the International Association for the Physical Sciences of the Oceans (IAPSO) and is a service of the International Association of Geodesy (IAG). It also contributes to the IAG Global Geodetic Observing System (GGOS). Moreover PSMSL has a key role in the Intergovernmental Oceanographic Commission's (IOC's) Global Sea Level Observing System (GLOSS).

The primary aim of the PSMSL is the provision of the global databank for long-term sea level information from tide gauges. PSMSL has continued to increase its efforts in this regard and over the last two years over 2500 station-years of mean sea level data were entered into the PSMSL database, increasing the total PSMSL data holdings to over 70000 station-years from over 2350 stations. In addition, the PSMSL, together with the British Oceanographic Data Centre (BODC), is responsible for the archive of delayed-mode higher-frequency sea level data (e.g. hourly or higher frequency values) from the IOC's GLOSS Core Network. There are plans that this will be closely linked with the Global Extreme Sea Level Analysis (GESLA) dataset in the future.

The PSMSL database contains monthly and annual mean values of sea level. The dataset and ancillary information are provided free of charge and are made available to the international scientific community through the PSMSL website (www.psmsl.org). Accompanying metadata includes station descriptions and their locations, types of instrumentation and, where available, frequency of data collection as well as notes on other issues of which users should be aware (e.g. earthquakes that are known to have occurred in the vicinity or subsidence due to local groundwater extraction). The free access to data by users is central to the PSMSL's mission and conversely no supplier is ever paid for their data nor are licensing terms ever entered into. As ever, we are very grateful to our data suppliers (Annexes 1 and 2 list the countries and organisations which have supplied data during 2017 and 2018).

The PSMSL mailbox psmsl@noc.ac.uk responds to requests for information from national tide gauge agencies, decision makers (local councils, Parliamentary enquiries), the media and the general public.

2 Sea Level Futures Conference

PSMSL reached its 85th anniversary in 2018, and celebrated its long history of providing mean sea level records from tide gauges by hosting an international meeting. The "Sea Level Futures" Conference, attended by over 100 delegates (Figure 1) from 65 international organisations, was dedicated to examining the current state-of-knowledge of sea level

research, and discussed the developments in observational networks and technology required over the next ten years to allow the community to continue enhancing understanding of global and regional sea level rise and variability.



Figure 1: Sea Level Futures Conference attendees

Current sea level science provides clear evidence that sea level is rising and this is already impacting coastal areas. Addressing the challenges for the coastal areas in a warming climate requires integrated, sustainable and continued observations, data products and advanced modelling capability. Conference participants recognised the need for close collaboration between scientists from different disciplines and the stakeholder community to develop a response to sea level change and implement measures to adapt to and mitigate its effects.

The key recommendations are summarised in a [conference statement](#).

3 Prof. Philip Woodworth elected as an IUGG Fellow

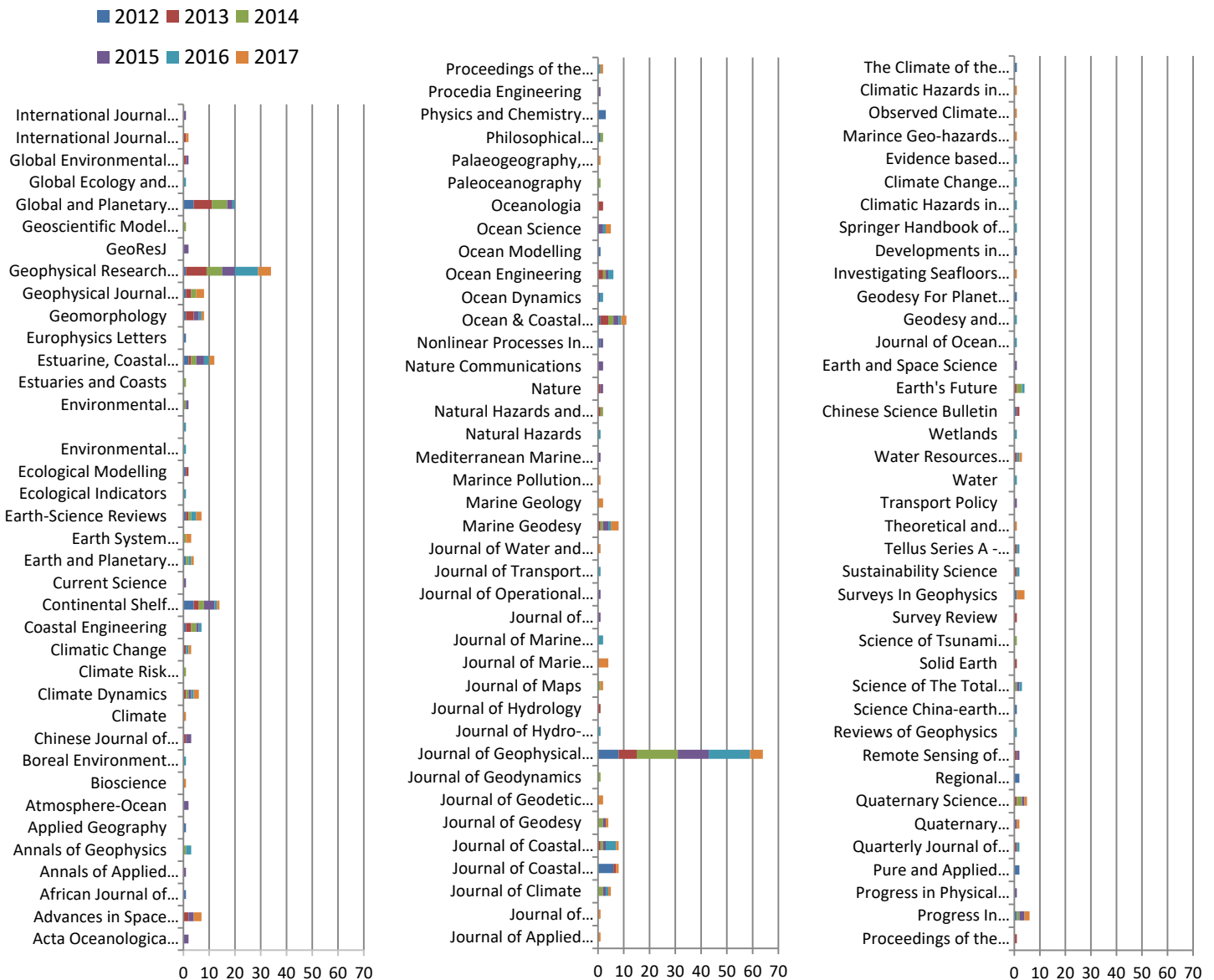
PSMSL is pleased to announce that Prof. Philip Woodworth has been elected as an IUGG Fellow – this will be formally bestowed by the IUGG President at the Award Ceremony of the XXVII IUGG General Assembly on 13 July 2019 in Montreal, Canada. Fellowship of the IUGG is a tribute, awarded by the IUGG Bureau, to individuals who have made exceptional contributions to international cooperation in geodesy or geophysics and attained eminence in the field of Earth and space sciences (IUGG by-law 22).

Prof. Woodworth was Director of the PSMSL for many years, and through promotion of the PSMSL and publications across a range of topics (underpinned by PSMSL data), he has contributed to research on sea level variability on a wide range of time scales. His work with rare historical data sets has put the changes seen during the 20th and 21st centuries into a long-term context, in particular helping to estimate acceleration of sea level rise. His work has benefited research and international communities in the fields of past sea level change, climate change, ocean circulation and tides, coastal processes, vertical crustal motions at coastlines, geology, geodesy and calibration of altimetry systems. He is currently an Emeritus Fellow of the National Oceanography Centre and Visiting Professor, Liverpool University School of Environmental Sciences.

His IUGG citation reads: “Woodworth, Philip (UK) for his significant advancement of sea-level science and outstanding contribution to international scientific cooperation, especially his leadership of the Permanent Service for Mean Sea Level (PSMSL).”

4 Number of Citations for PSMSL data series for the period 2012-2017

Annually PSMSL collates statistics on the number of peer-reviewed published papers that use the PSMSL dataset. We do this in a number of ways. Firstly, we find papers that have cited either Holgate *et al* [2013] or Woodworth and Player [2003] in Web of Science and Scopus. Not all papers will have cited either of these papers so we also perform full text searches for “PSMSL” or “Permanent Service”. These papers are then manually filtered to remove any papers that are not actually referring to PSMSL. We note that it is very easy to miss papers that use our dataset but have not referred to us directly so our statistics are likely to be biased low. Figure 2 below shows the statistics for the last six years. There are over 400 papers in 116 distinct journals ranging from a variety of subject areas including oceanography, quaternary research, geodesy, climate, environment and multidisciplinary. The top three journals in terms of total publications are Global and Planetary Change (20; JCR impact factor 3.548); Geophysical Research Letters (34; JCR impact factor 4.456) and Journal of Geophysical Research (64; JCR impact factor 3.318). Other notable citations come from Nature (2; IF 38.138), Nature Communications (2; IF 11.329), PNAS (1; 9.423), and Reviews of Geophysics (1; 11.444). There were over 73 citations in journals with impact factors greater than 4.



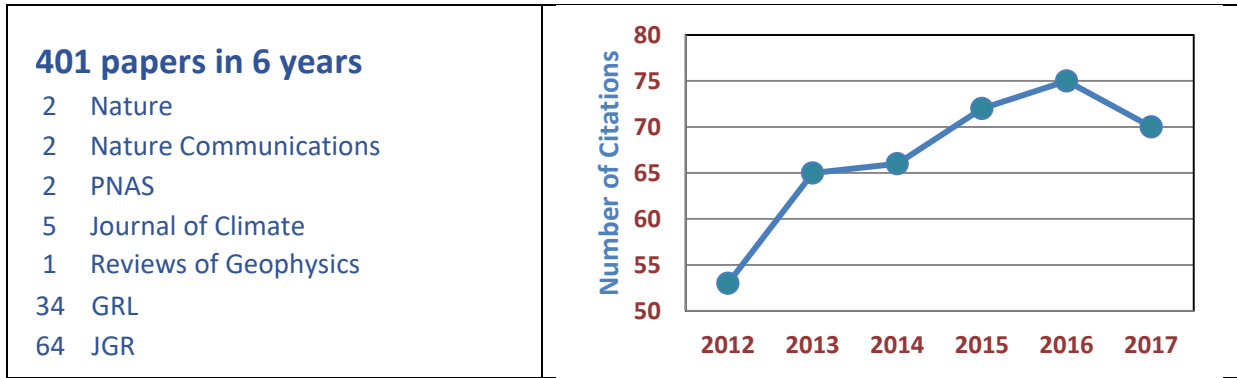


Figure 2: Statistics of PSMSL Data Set Citations

5 Mean Sea Level Data received during 2017-18

Figure 3 shows the amount of data received by the PSMSL over the last 5 years indicating how many station years have been added to the database each year and from how many stations. The number of stations remains at about 800, but the number of station years can vary considerably from year to year. This may be due to a data provider reviewing and resupplying their historical dataset or if a backlog of data has been supplied.

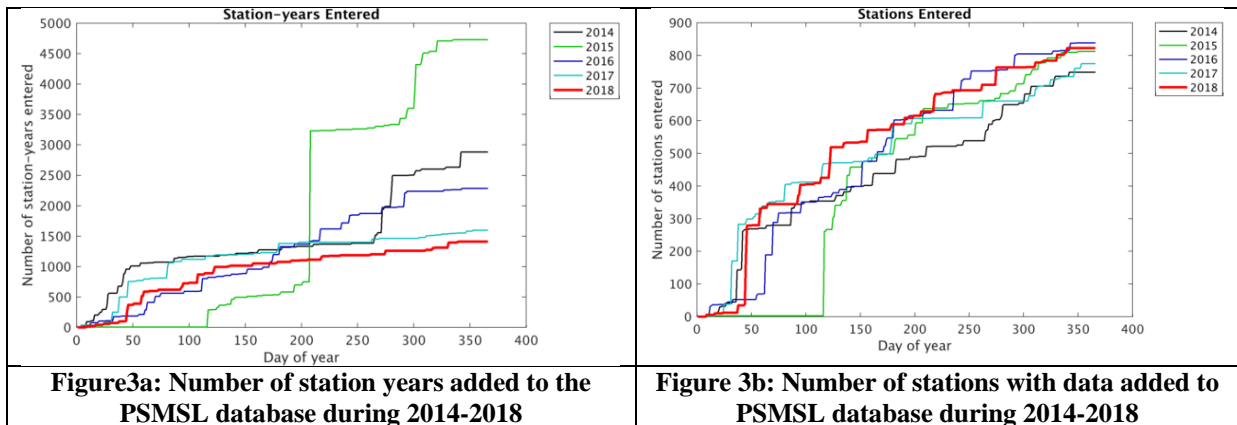


Figure 4 shows the stations which have provided data during 2018, or in 2017 (but not 2018). 815 stations have provided data in 2018, with a further 111 providing data in 2017. These can all be considered as active stations, but there are many stations for which no data have been supplied for many years. Some of these have undoubtedly ceased to operate; for others contact with the operators is being actively pursued. New stations are providing near-real-time data for tsunami monitoring, but a number of these do not yet supply quality controlled mean sea level values to the PSMSL; these are also being sought to add to the dataset.

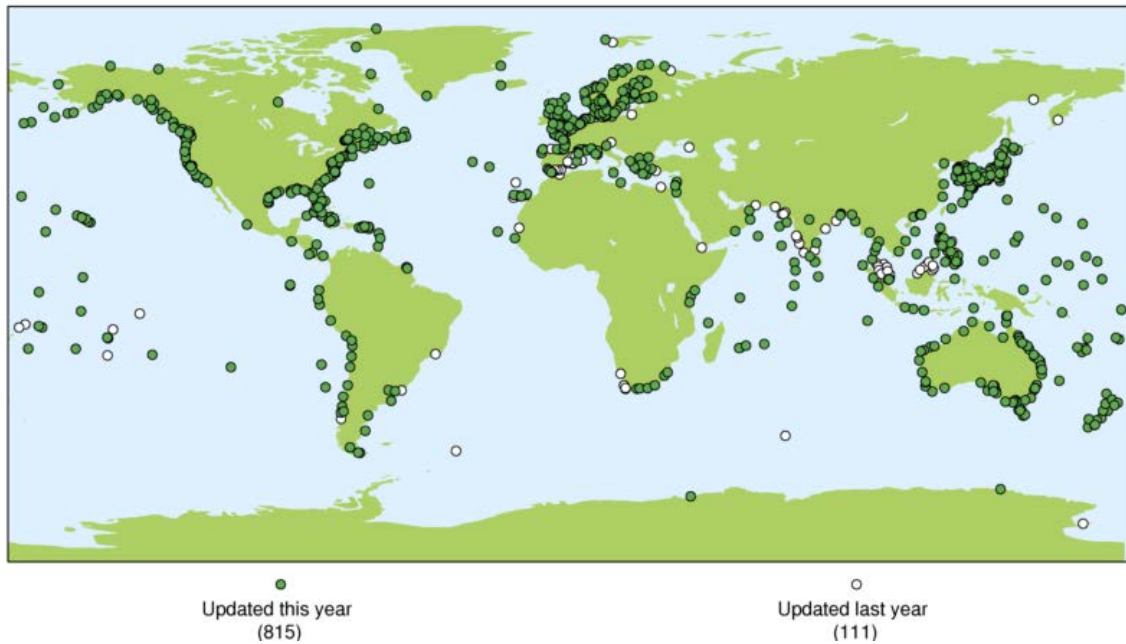


Figure 4: New data received by PSMSL during 2017-18

Figure 5 gives a more detailed view of the data held by PSMSL, indicating where data were supplied in the past – in particular, the decline in the number of stations in the Arctic is noticeable. However, many regions regularly supply mean sea level data (e.g. North America, Europe, Japan, Australia, New Zealand, South Africa, India), but there are still gaps in data receipts from the Arctic and Antarctic, parts of South East Asia, South and Central America, and Africa; these are presently being targeted to try to improve data flow. African countries received special attention through the Ocean Data and Information Network for Africa (ODINAfrica) projects and the Indian Ocean Tsunami Warning System (IOTWS), but many of these are no longer operating satisfactorily.

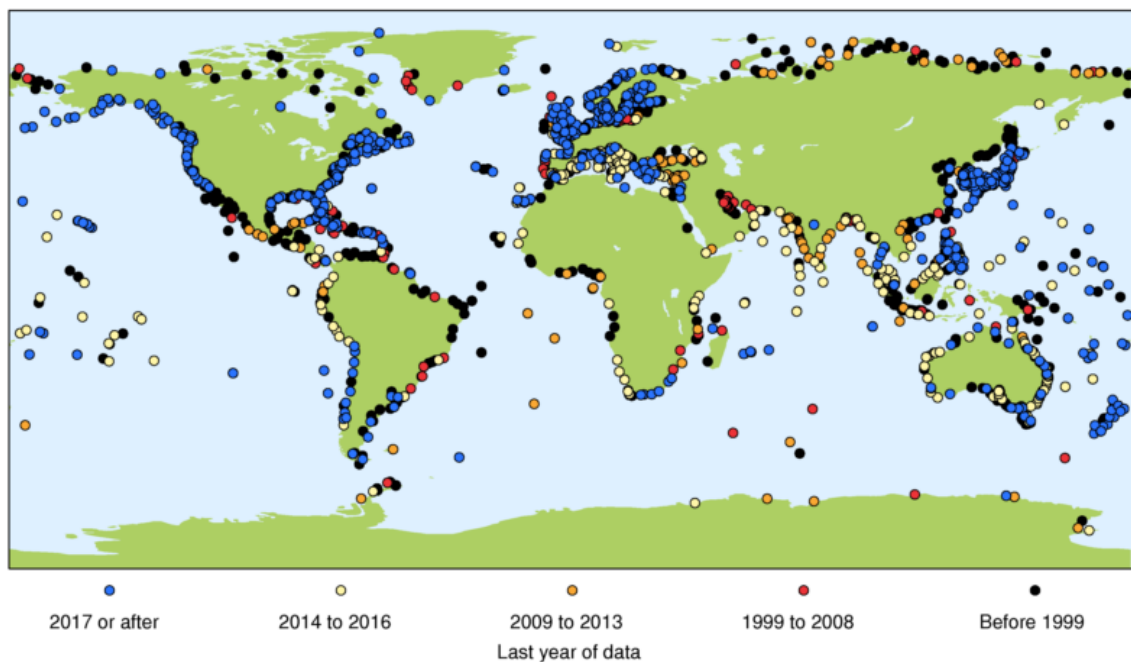


Figure 5: Year of most recent data received by PSMSL

In Figure 6 below, the uneven distribution of data supply is further illustrated; pale blue shows the data receipts from the Northern Hemisphere while the dark blue area of the plot shows the data receipts from the Southern Hemisphere.

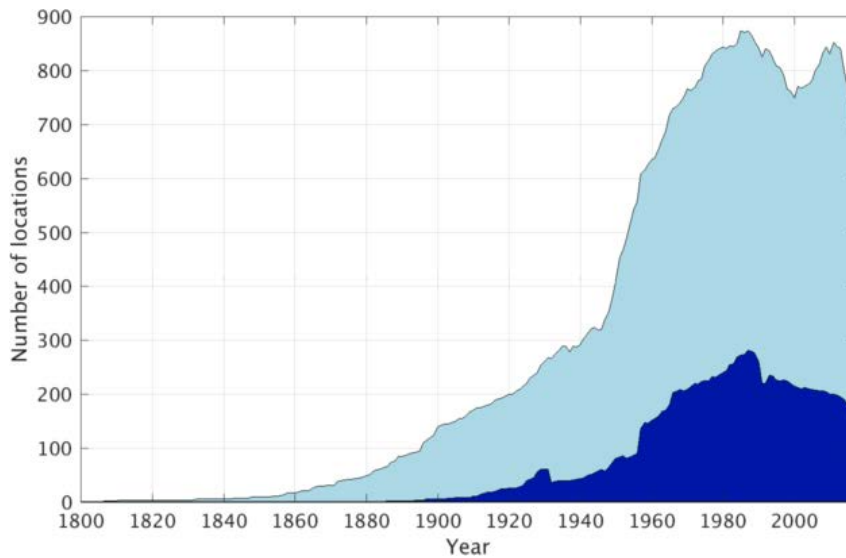


Figure 6: North-south hemisphere distribution of data received by PSMSL

The distribution of the longest time series also reflects this, as shown in Figure 7. The Southern Hemisphere has only a small number of time series of over 100 years; most are found in the Northern Hemisphere. Overall western Europe, North America and Japan have most of the longest records, and also have a high proportion of records of 50 to 100 years, although Australia, New Zealand, South Africa, Chile and Argentina also have a number of records of this length. The Arctic and Antarctic have very few records of greater than 50 years, and a number of the Russian Arctic tide gauges are no longer operational.

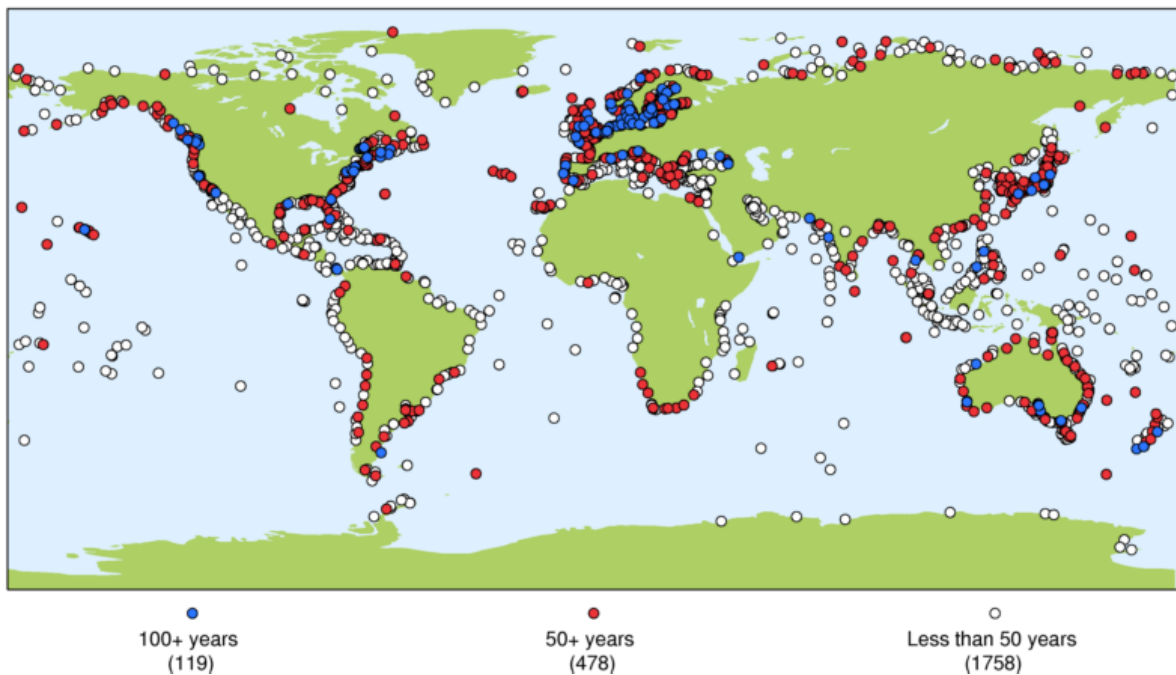


Figure 7: Distribution of long tide gauge records

6 Global Sea Level Observing System (GLOSS) Core Network Status

The [GLOSS](#) was established by the IOC in 1985 to provide coordination for global and regional sea level networks in support of, and with direction from, the oceanographic and climate research communities. Various tide gauge networks have contributed to GLOSS, each with a different focus and each changing over time as research and operational priorities evolve.

The main component is the GLOSS Core Network (GCN), a global set of 290 tide gauge stations (Figure 8) that serves as the backbone of the global *in situ* sea level network. The network is designed to provide an approximately evenly distributed sampling of global coastal sea level variation. Ideally, each station should provide data on a variety of timescales for use in different applications; for example, real-time data can be useful for tsunami monitoring, whereas monthly and annual mean data can be used to monitor long-term changes in sea level. In addition, sites should also be fitted with GNSS equipment to monitor land movement at or near the site. Further information on GLOSS is available in the [GLOSS Implementation Plan 2012](#) and on the GLOSS website (www.gloss-sealevel.org).



Figure 8: GLOSS Core Network

For many years PSMSL has produced maps showing the status of the Core Network from its perspective, and more recently has been generating additional maps, automatically updated weekly, showing the status for the other GLOSS data streams (e.g. real-time, fast-mode, delayed-mode and TIGA/GNSS). Figure 9 presents how PSMSL currently sees the status of the GLOSS Core Network. The map indicates whether a station is considered currently operational (green marker), has been operational in the past (orange marker), or has never operated successfully (white marker). Figure 10 shows the development of the GCN in terms of sites providing mean sea level data to the PSMSL from 1989 through to 2017 – a period of almost 30 years. The figure also includes changes to the definition of the GCN over time.

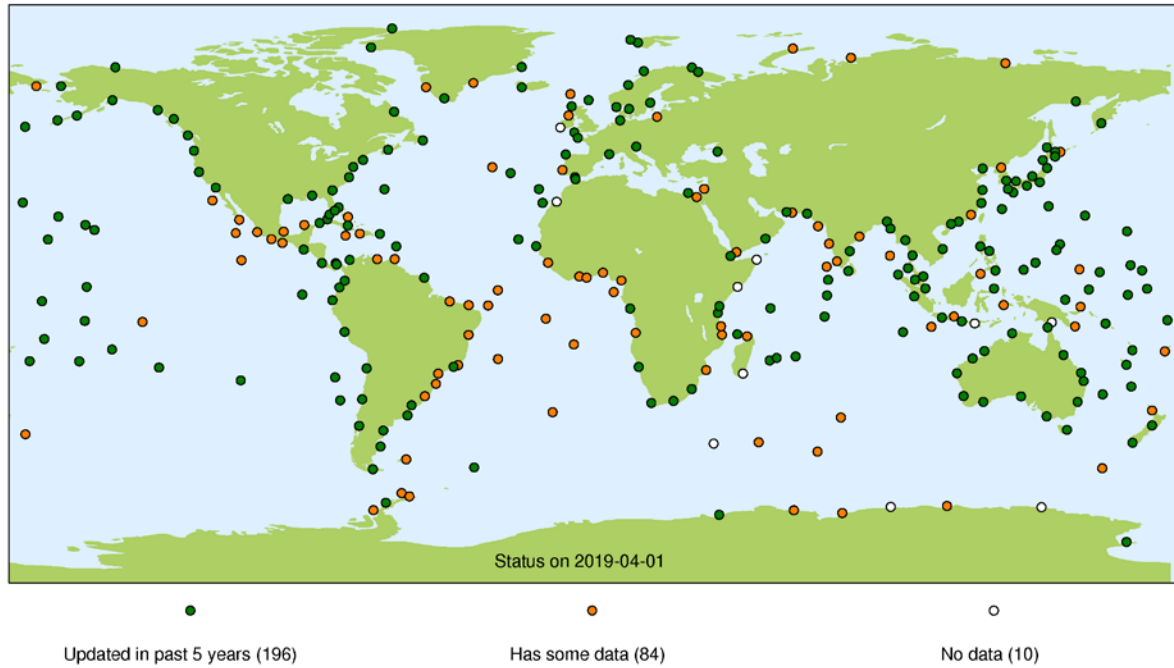


Figure 9: GLOSS Status from a PSMSL perspective

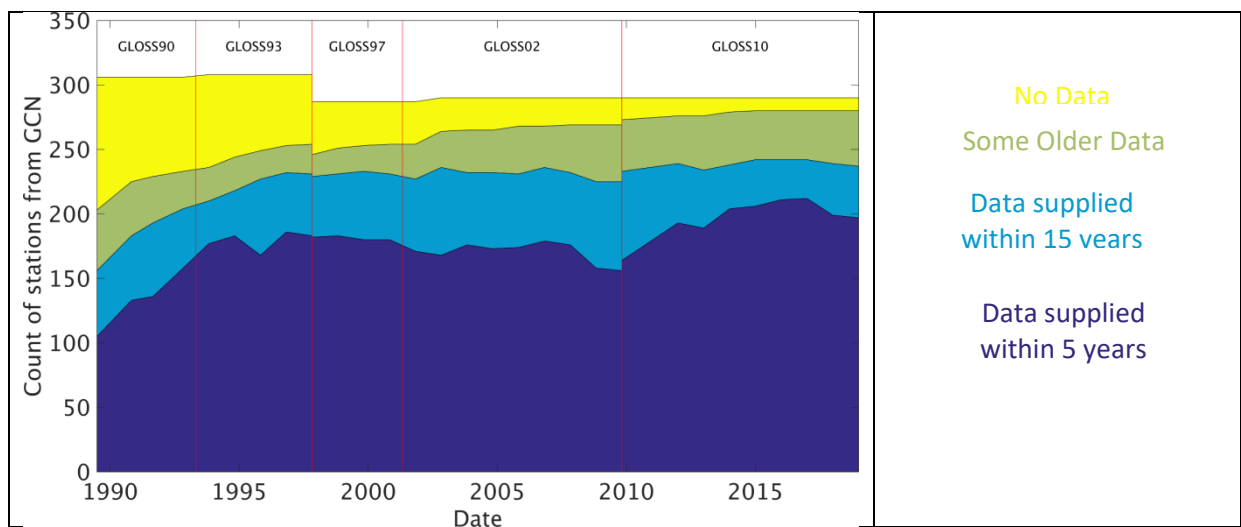


Figure 10: Status of GLOSS Core Network from a PSMSL perspective (1989-2018)

7 Data Archaeology in collaboration with GLOSS

PSMSL has also taken the lead in data archaeology through the IOC GLOSS programme, mainly through the activities of Elizabeth Bradshaw. To further this effort she participated remotely in the Research Data Alliance (RDA) 10th Plenary Meeting in September 2017 including the Data Rescue Interest Group session and the 11th International Atmospheric Circulation Reconstructions over the Earth (ACRE) workshop (November 2018) where she gave a presentation on the status of GLOSS data rescue activities and working with the meteorological community.

Figure 11 shows some of the recent data rescue activities over the last 5 years. The red dots on the map are data recovered through data rescue activities. As well as numerous records in Europe, there have been newly digitised data from data sparse regions such as Dakar in Africa (36 years starting in 1902), St. Helena in the South Atlantic (1826 - 1827), Newcastle and Williamstown in Australia and Mawson and Cape Denison in Antarctica (months in the form of paper charts). In addition, Talke and Jay (2017) provides an update to the data rescue work carried out by Stefan Talke and team and includes sites not covered by the above map. Very recently PSMSL has received a dataset rescued from Porto Corsini/Marina di Ravenna, Italy (Bruni, S., et al, 2019).

However, many historical tide gauge data still exist in non-digital form. These mostly paper-based datasets are of great potential value to the sea level community for a range of applications, the most obvious being the extension of existing sea level time series as far back as possible in order to understand more completely the timescales of sea level change. Lack of funding and the time consuming nature of data rescue (manual digitisation, seeking accompanying metadata) continue to be barriers.

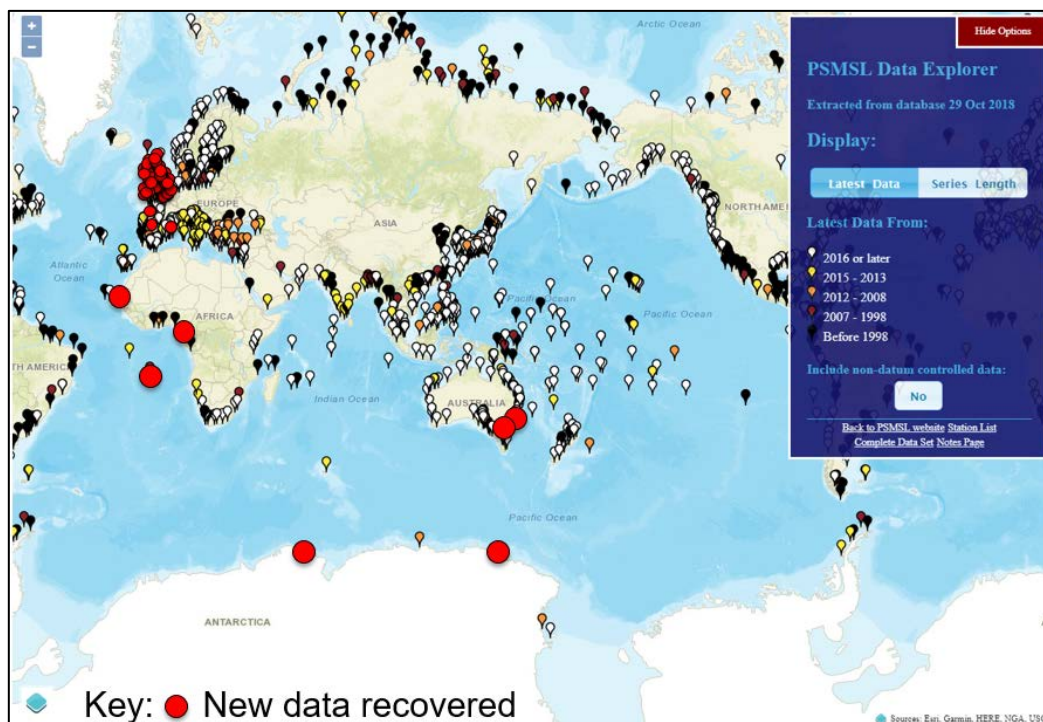


Figure 11: Sea level data rescue activities in the past 5 years

References:

- Talke, S. and Jay, D., 2017. Archival Water-Level Measurements: Recovering Historical Data to Help Design for the Future. *Civil and Environmental Engineering Faculty Publications and Presentations*. 412.
- Bruni, S., Zerbini, S., Raicich, F. and Errico, M., 2019. Rescue of the 1873–1922 high and low waters of the Porto Corsini/Marina di Ravenna (northern Adriatic, Italy) tide gauge. *Journal of Geodesy*, pp.1-18.

8 Developing a more structured and standardised approach to descriptive metadata

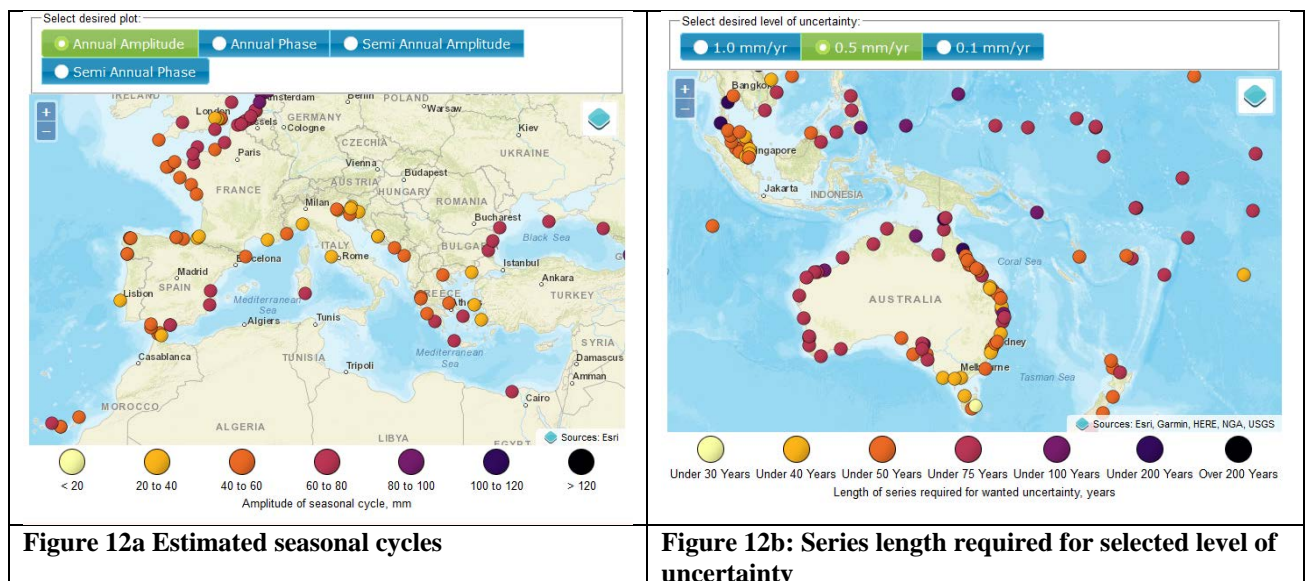
PSMSL has carried out a major redesign and reprogramming of its database. This has greatly expanded both the amount and level of structure within the metadata. In particular, the database now contains information about the links between the local tide gauges datums and national vertical datums. National vertical datums are linked to the EPSG registry, and will be linked to the ISO Geodetic Registry once it has been completed. Extra metadata from the database is gradually being added to the PSMSL website and distributed data files.

Soon the data will be released in netCDF format, which will make more of this structured metadata machine readable. In addition, PSMSL is working with other providers of tide gauge data to develop ways of distributing tide gauge data using internationally agreed standards.

9 Interactive map showing long-term trends

The web pages illustrating the trends in the tide gauge data set, as well as yearly variation of sea level with respect to an average ([sea level anomalies](#)), currently use the 10 Jan 2017 release of the data set. The [interactive map](#) showing fitted trends now uses a better statistical model that accounts for autocorrelation in the time series, allowing us to produce realistic estimates of error in the trends. There is also an estimate of the number of years required at each station to produce a trend with an uncertainty of 1.0, 0.5 and 0.1 mm/year. The trends also now use the corrected data which was measured using Mean Tide Level rather than Mean Sea Level.

The relative sea level trends product has been further enhanced (Figure 12) by adding maps showing the estimated [seasonal cycles](#) and [number of years required to obtain a sea level trend of a given uncertainty](#).



10 Ellipsoidal Links for Revised Local Reference Data

PSMSL continues to work with Système d'Observation du Niveau des Eaux Littorales ([SONEL](#)) to offer information about the geocentric height and vertical rate of movement of some tide gauges. These estimates are dependent on linking the tide gauge's primary benchmark with the GNSS receiver through levelling. As a result, these are currently only available at small subset of stations. The details of the link are shown on the station's RLR diagram page and a fuller description of the work is available [here](#). The available information has been improved using feedback from users: for example, we have created a [table of all sites where a tie has been established](#).

11 Release of Bottom Pressure Recorder de-drifting code

As requested by IAPSO, PSMSL archives bottom pressure recorder data. When bottom pressure recorders are deployed, readings drift over time. It is impractical to recalibrate the instrument mid-deployment, so an estimate of the drift must be removed before the data can be used.

The common approach has been to fit a short-term exponential drift, combined with a longer-term linear drift. However, the accuracy of this fitted drift can be improved by first removing all known annual or longer period fluctuations, such as changes due to the pole tide. As part of a recent project, software has been developed which attempts to improve de-drifting by removing these fluctuations.

The PSMSL website now contains a [link](#) to the Matlab code developed: this code will have wider uses, as it includes functions to can calculate the long-period equilibrium tides and the polar tide. Please note that this technique cannot separate instrumental drift from any other secular trend, so recorders subject to this drift cannot be used to derive sea-level trends.

12 Development of automatic quality control software

The PSMSL continues to be involved with developing training information and organising training courses, for operators of tide gauges and users of their datasets. As part of a project funded by the UK Foreign and Commonwealth Office supporting small island states, PSMSL were tasked with developing prototypes for automatic quality control software for tide gauges, and a simple data portal for distributing tide gauge data and sea level information. The outputs are now available at <https://psmsl.org/cme>. The automatic quality control software uses MATLAB, and includes code to carry out tidal analysis and create tidal predictions. We have plans to keep developing the quality control software in the future, including creating a version in Python.

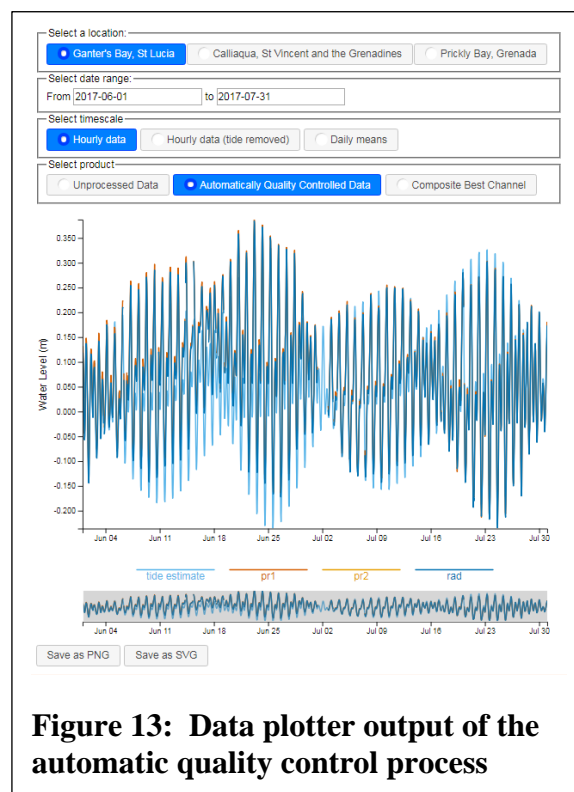


Figure 13 illustrates the data plotter outputs of the quality control process. The user can select output from one of three tide gauges in the Windward Islands, and choose to display hourly data (maximum one year), hourly data with the fitted tide removed, or daily means. Display options are unprocessed data (data before the quality control is applied), automatically quality controlled data, and a “composite best channel” option, where the algorithm combines output flagged good from all available sensors at a site into a single series. An estimate of the fitted tide is included if hourly and quality control data options are selected.

The plot can be zoomed and panned using a mouse, or by resizing the grey rectangle in the small overview plot at the bottom of the figure. The image can be saved in raster (.png) or vector (.svg) formats using the buttons at the bottom of the plot.

13 Ground based GNSS - Multipath Reflectometry (GNSS-MR)

Simon Williams has been involved in recent studies that have demonstrated the utility of ground based GNSS Multipath Reflectometry (GNSS-MR) for sea level studies. GNSS receivers suffer from multipath (Figure 14), but if the physical and geometric effects multipath has on the measured signals are understood then this knowledge can be used to measure other environmental parameters.

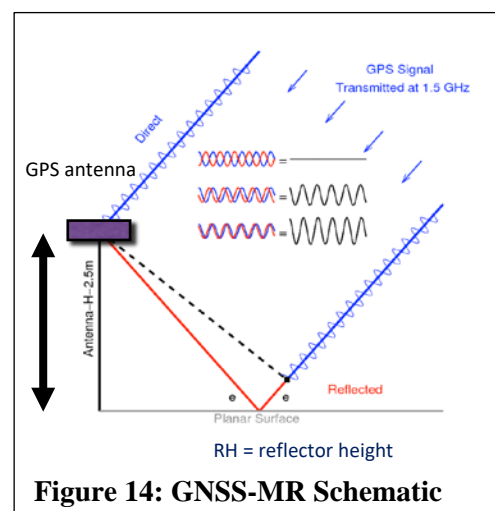
Two Current Projects are underway on GNSS-Multipath Reflectometry:

1. Comparison of GNSS-MR and Satellite Altimetry (GOCE++ CCN), with DTU, Denmark

This is an example from one of the first “accidental” sites (i.e. not installed to do this), Peterson Bay in Alaska. There are three signals from different satellites passing over at different tidal states: low tide (so closer to the antenna), mid-tide and high tide, further from the antenna. We see that we have different frequencies – higher frequency for a larger reflector height. These signals can be taken and run through a Lomb-Scargle periodogram (power spectrum) and pick the peak – which is the reflector height. Conclusions so far indicate that ground based GNSS-MR using pre-existing geodetic quality equipment can measure sea level remotely with a daily accuracy of around 2-3 cm and a monthly accuracy of about 1-2 cm. There is some bias in the results – probably due to the antenna phase centre.

2. LocTIPS: Low Cost GNSS Tide & Sea Level Measurements for Inter-tidal Public Safety (with co-workers at NOC)

A recent NERC-funded proof of concept award has successfully demonstrated that GNSS signals reflected off the sea surface and received by very low cost (£100) receivers can be used to estimate the difference in height between the receiver and the water rather than a geodetic quality one (~£10k) – with an antenna designed to reduce multipath. This represents a method of remotely sensing tidal elevations and, if averaged over time, mean sea level. This project is in collaboration with the Royal National Lifeboat Institution (RNLI) to provide tidal information for predicting when people can safely travel to and from Coney Island, Sligo, Ireland, over the strand (beach). The results so far compare well with tide gauge measurements (Figure 15). Results look favourable with an accuracy



similar to that of the geodetic receivers. There is also the potential to measure other environmental variables (e.g. wave height, beach profiles).

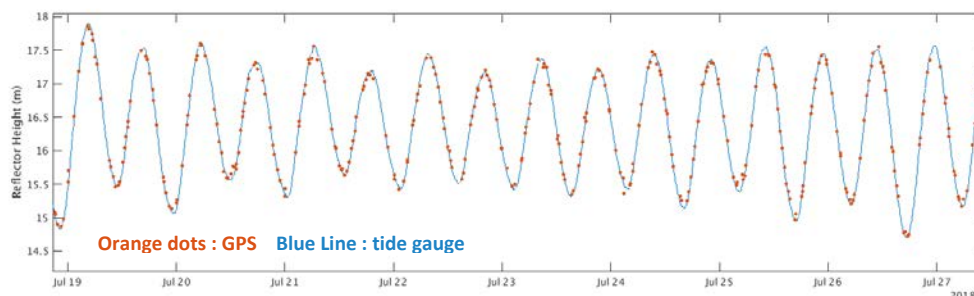


Figure 15: GNSS-MR results compared to tide gauge observations

14 PSMSL Staff and Advisory Group

Primary funding for PSMSL comes from NERC *via* the NOC; other projects provide small amounts of funding. During 2017 and 2018 this was approximately equivalent to 2 full time staff, but in reality all of those listed in the table below have contributed to PSMSL, and as ever, we are grateful to others in the NOC Sea Level and Technology Groups who contribute to, or represent PSMSL at, meetings, conferences, or other fora. Dr Mark Tamisiea, a former member of PSMSL, has also represented us at GGOS meetings.

Dr. Lesley Rickards, Director	Dr. Angela Hibbert, Capacity building
Mrs. Kathy Gordon, Data Manager	Dr. Svetlana Jevrejeva, Principal Scientist
Dr. Andrew Matthews, Data Scientist	Dr. Simon Williams, Senior Scientist
Miss Elizabeth Bradshaw, Data Scientist, BODC	Prof. Philip Woodworth, Scientific Advisor

Lesley Rickards, who has been PSMSL Director since 2007, has recently stepped down from this role. She is replaced by Elizabeth Bradshaw who has worked alongside the PSMSL for many years. Kathy Gordon and Andrew Matthews continue in their current roles and Svetlana Jevrejeva continues to act as the principle PSMSL scientist.

The PSMSL is also served by an Advisory Group which at present consists of Dr. R. Neilan (JPL, USA), Prof. G. Mitchum (University of South Florida, USA), Dr. Guy Wöppelmann (Université de La Rochelle, France), Dr. P. Knudsen (Danish National Space Institute), Dr. R. Bingley (Nottingham University, UK), and Dr. T. Aarup (IOC, UNESCO).

15 Summary and forward look

2017-18 were once again active years for PSMSL with regard to important workshops and conferences, and a busy one with regard to data acquisition and analysis. The functions provided by the PSMSL are in as much demand as ever, and new products continue to be developed and activities have expanded. Future plans include:

- Improved integration of the mean sea level data set with sources of higher frequency data and improving the quality of accompanying metadata;
- Continued development of interoperable metadata formats for tide gauge data;

- Assess whether PSMSL follows FAIR data principles (Findable, Accessible, Interoperable, Reusable), and improve areas where we do not;
- Keeping contact with data suppliers (the trend being to acquire data from websites rather than direct supply) and ensuring that data made available in real-time are also contributed to PSMSL;
- Mint a digital object identifier (DOI) for the PSMSL dataset (in collaboration with BODC);
- Development of protocols concerning how sea level data recovered from historical records can be incorporated into the PSMSL dataset;
- Continue collaboration with SONEL (IAG TIGA Working Group data centre) and with GGOS;
- More information on the website about links between tide gauge datums and national datums and ellipsoids - available in both human and machine readable formats, using internationally agreed standards;
- Plan incorporation of sea level records measured using GNSS reflectometry into the PSMSL
- Creation of software for automatic first level quality control of high frequency data
- Redesign and update of the content on the PSMSL website;
- Further develop data archaeology with the Group of Experts on GLOSS.

Annex 1: Stations received from individual countries

	2017	2018		2017	2018
American Samoa	1	1	Malta	1	1
Antarctica	1	3	Marshall Islands	3	3
Argentina	1	5	Martinique	1	1
Australia	80	67	Mauritius	2	2
Bahamas		1	Mayotte	1	1
Bangladesh		1	Mexico		1
Belgium	3	3	Micronesia, Federated States of	1	4
Bermuda	1	1	Monaco	1	1
British Indian Ocean Territory		1	Myanmar	1	2
Canada	39	46	Namibia	2	
Cape Verde		1	Nauru	1	1
Chile	12	14	Netherlands	11	11
China	6	6	New Caledonia	5	4
Cocos (Keeling) Islands	1	1	New Zealand	13	13
Colombia		1	Northern Mariana Islands		1
Cook Islands	1	2	Norway	23	23
Costa Rica		2	Oman		3
Croatia	5		Palau		1
Cuba	12	13	Panama	1	1
Curaçao		1	Papua New Guinea	1	1
Denmark		14	Peru		4
Dominica		1	Philippines	21	21
Dominican Republic		2	Portugal	3	3
Ecuador		4	Puerto Rico	7	8
El Salvador		1	Réunion	1	2
Fiji	2	2	Russian Federation	4	5
France	32	37	Saint Pierre and Miquelon	1	1
French Guiana	2	3	Samoa	1	1
French Polynesia	5	2	Senegal		1
Georgia	2		Seychelles		1
Germany	3	6	Singapore	10	10
Greece	17	16	Solomon Islands	1	1
Greenland	3	3	South Africa	10	6
Grenada	1	1	South Georgia & South Sandwich Is.		1
Guadeloupe	1	1	Spain	44	13
Guam	2	2	Sri Lanka		1
Haiti		1	Svalbard and Jan Mayen	2	2
Hong Kong	6	6	Sweden	23	24
Iceland	1	1	Tanzania, United Republic of		1
India	14	5	Thailand	5	5
Indonesia	1	8	Tonga	1	1
Isle of Man	1	1	Tuvalu	1	1
Israel	6	6	United Kingdom	48	36
Italy	33	2	United States	116	130
Japan	99	98	United States Minor Outlying Islands	1	3
Jersey	1	1	Uruguay	1	1
Kenya		2	Vanuatu	1	1
Kiribati	1	3	Viet Nam		2
Korea, Republic of	46	44	Virgin Islands, U.S.	4	4
Malaysia	18		Wallis and Futuna	1	
Maldives		3	Åland Islands		1

Annex 2: Data Suppliers 2017 and 2018

Supplier	Country	No. of stations	
		2017	2018
Servicio De Hidrografia Naval, Argentina	Argentina	4	4
Australian Ocean Data Centre	Australia		1
National Tidal Centre	Australia	46	80
Agency For Maritime And Coastal Services	Belgium	3	3
Director Of Hydrography And Navigation (Dhn)	Brazil	1	
Canadian Hydrographic Service	Canada	42	46
Hydrographic And Oceanographic Service Of The Chilean Navy	Chile	14	14
National Marine Data And Information Service (Nmdis)	China	6	6
Cuban National Tidal Service	Cuba	11	13
Danish National Space Center	Denmark	3	3
Det Dansk Meteorologiske Institute	Denmark		14
Captainerie Du Port De Djibouti	Djibouti	1	
Oceanographic Institute of the Navy	Ecuador		1
National Institute Of Oceanography And Fisheries	Egypt	1	
Finnish Meteorological Institute	Finland	14	14
Institut Geographique National, France	France	1	1
Service Hyd. Et Ocean. De La Marine	France	56	50
Bundesamt Fur Seeschiffahrt Und Hydrographie Hamburg	Germany	6	6
Hellenic Navy Hydrographic Service	Greece	16	16
Hong Kong Observatory	Hong Kong	6	6
Icelandic Coast Guard - Hydrographic Dept.	Iceland	1	1
Survey Of India	India	15	5
National Cartographic Centre Of Iran	Iran, Islamic Republic Of	1	
Survey of Israel	Israel		6
ARPAE	Italy		1
Instituto Talassografico Di Trieste	Italy	1	1
Geographical Survey Institute	Japan	25	25
Japan Meteorological Agency	Japan	54	53
Japan Oceanographic Data Centre, M.S.A.	Japan	20	20
National Institute for Polar Research	Japan		1
National Oceanographic Research Institute	Korea, Republic Of	46	44
Department Of Survey And Mapping	Malaysia	20	
Malta Maritime Authority	Malta		1
Meteo - France	Martinique	1	1
Port Autonome De Nouakchott	Mauritania	1	
Meteorological Services, Mauritius	Mauritius	2	2
Rijkswaterstaat	Netherlands	11	11
Land Information New Zealand (Linz)	New Zealand	12	12
National Institute of Water and Atmospheric Research	New Zealand		1
Norwegian Mapping Authority	Norway	24	24
Hydrographer Of The Pakistan Navy	Pakistan	1	

National Mapping And Resource Information Authority	Philippines	21	21
Hydrographic Institute	Portugal	3	3
World Data Center B1	Russian Federation	5	6
Maritime Port Authority Of Singapore	Singapore	10	10
Directorate Of Hydrography, S.A.	South Africa	10	6
Aranzadi	Spain	1	
Dr. Josep Pascual Massaguer	Spain	1	1
Geolab	Spain		1
Instituto Espanol De Oceanografia	Spain	11	11
Puertos Del Estado	Spain	34	
Swedish Met. And Hyd. Institute	Sweden	24	24
Oceanographic Division, Hydrographic Dept.	Thailand	5	5
N.O.C.	United Kingdom	33	36
Port of London Authority	United Kingdom		3
N.O.A.A. / N.O.S.	United States	145	146
Panama Canal Commission	United States	1	1
University of Hawaii Sea Level Centre	United States		63
Sohma	Uruguay	2	1

Annex 3: Acronyms

ACRE	Atmospheric Circulation Reconstructions over the Earth
BODC	British Oceanographic Data Centre
CME	Commonwealth Marine Economies
DOI	Digital Object Identifier
DTU	Danmarks Tekniske Universitet (Technical University of Denmark)
EPSG	European Petroleum Survey Group
GCN	GLOSS Core Network
GESLA	Global Extreme Sea Level Analysis
GGOS	Global Geodetic Observing System
GLOSS	Global Sea Level Observing System
GNSS	Global Navigation Satellite System
GOCE	Gravity field and steady-state Ocean Circulation Explorer
IAG	International Association of Geodesy
IAPSO	International Association for the Physical Sciences of the Oceans
IGS	International GNSS Service
IOC	Intergovernmental Oceanographic Commission
IOTWS	Indian Ocean Tsunami Warning System
ISC	International Science Council (formerly ICSU)
ISO	International Standards Organisation
IUGG	International Union of Geodesy and Geophysics
JCR	Journal Citation Reports
LEGOS	Laboratoire d'Etudes en Géophysique et Océanographie Spatiales
NERC	Natural Environment Research Council
netCDF	Network Common Data Form
NOC	National Oceanography Centre, UK
ODINAfrica	Ocean Data and Information Network for Africa
PNAS	Proceedings of the National Academy of Sciences of the USAmerica
PSMSL	Permanent Service for Mean Sea Level
RDA	Research Data Alliance
RLR	Revised Local Reference
SONEL	Système d'Observation du Niveau des Eaux Littorales
TIGA	IGS Working Group Tide Gauge Benchmark Monitoring Project
WDS	World Data System (International Science Council)